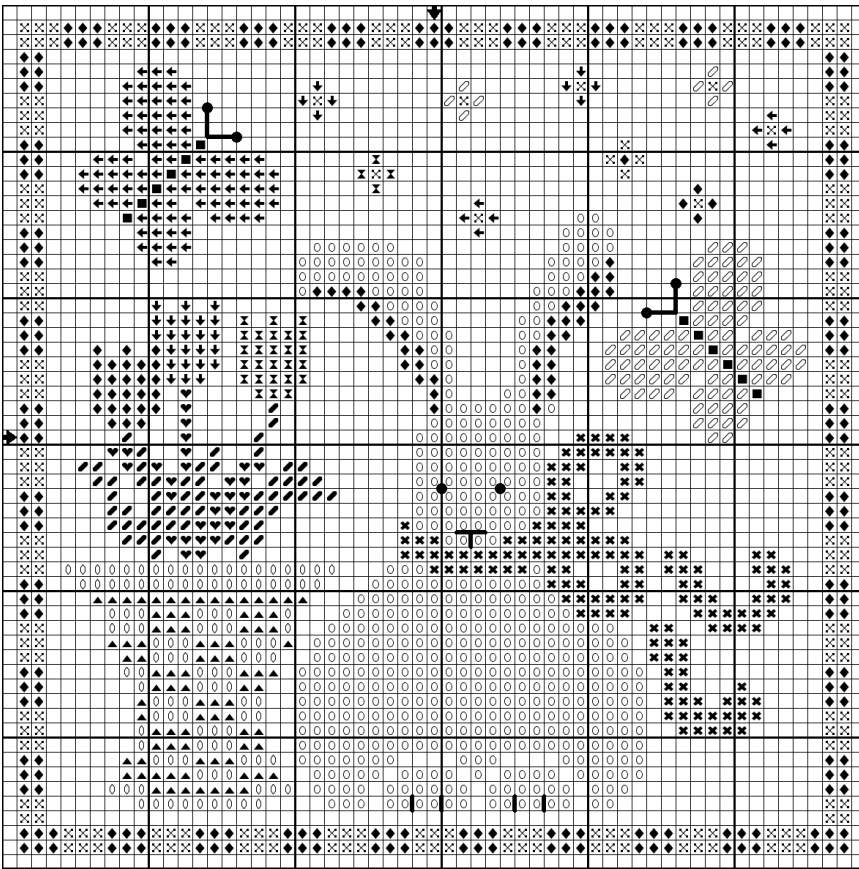


Checkerboard Bunny

SYMBOL Gentle Art Thread DMC



◆ Spring Grass	703
◀Morning Glory	341
✕ Daffodil	445
◆Victorian Pink	962
✕Cameo Pink	353
◊ Lavender Potpourri	209
↓Red Plum	3687
✕Tropical Ocean	926
■Soot	535
○ Oatmeal	White
◊ Flax	422
▲ Cidermill Brown	420
♥ Green Pasture	3815

STITCH COUNT: 57 long x 57 wide

DESIGN SIZE: 14ct= 4" x 4"

Stitch with 3 strands over 2 threads on Wichelt's 28ct. Blueberry Hand-dyed Jobelan #429512.

Backstitching:

Bunny's Nose & Butterflies' Antennae: 2 strands of Soot.

Bunny's Eyes & Butterflies' Antennae ends: French Knots with 2 strands of Soot.



This chart may be reproduced for customer handouts & newsletters, but may not be resold.